

DC EXHIBIT A

PROJECT INFORMATION

BUILDING DATA:
 APN: 017-117-093-000
 STREET ADDRESS: 2081 OAK MEADOW DR
 TOTAL PARCEL SIZE: 80,814
 CODES: 2019 CALIFORNIA BUILDING CODE
 2019 CALIFORNIA MECHANICAL CODE
 2019 CALIFORNIA PLUMBING CODE
 2019 CALIFORNIA ELECTRICAL CODE
 2019 CALIFORNIA ENERGY CODE
 2019 CALIFORNIA FIRE CODE
 2019 CALGREEN CODE

CONSTRUCTION TYPE: V-B
 OCCUPANCY: E/B
 BUILDING SF: ±12,914 SF.

PARKING DATA:
 PARKING REQUIRED: 1 PER EMPLOYEE PLUS 1 PER COMPANY VEHICLE PLUS A LOADING SPACE FOR EVERY 8 PERSONS.

PARKING PROVIDED

| | |
|--------------------------------|------------------|
| DISABLED ACCESSIBLE PARKING: | 2 SPACES |
| FUTURE EV PARKING: | 2 SPACES |
| CLEAN AIR/VANPOOL/EV PARKING: | 3 SPACES |
| STANDARD PARKING STALLS: | 43 SPACES |
| TOTAL PROVIDED PARKING: | 50 SPACES |

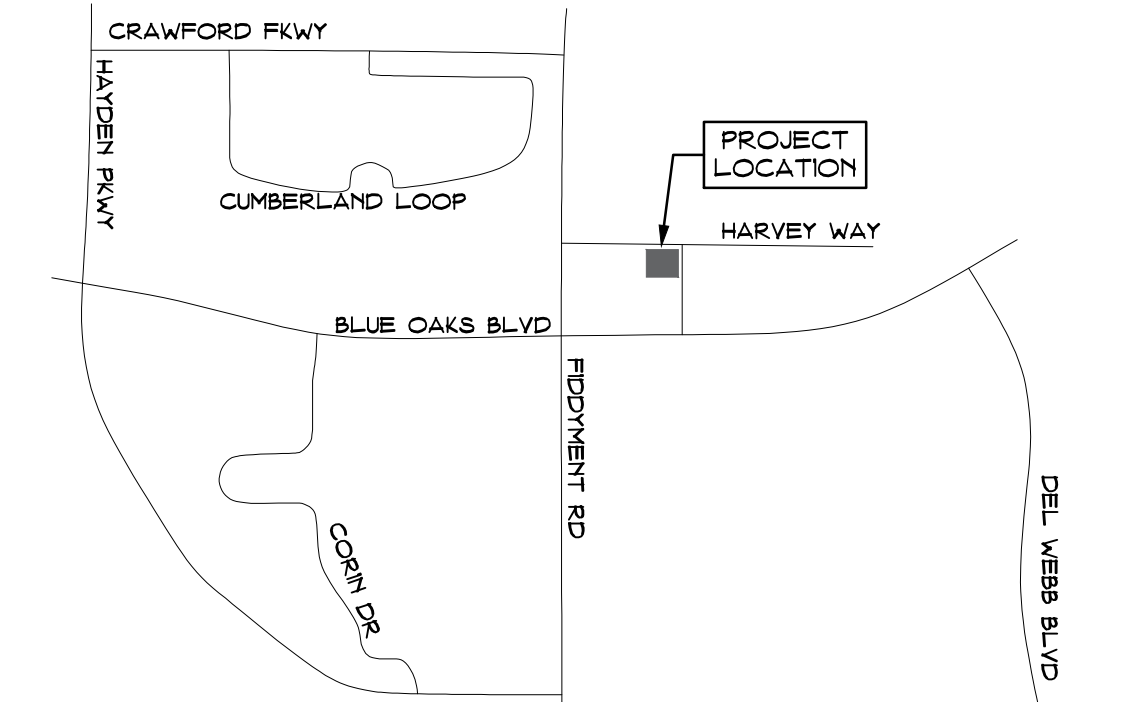
DRAWING INDEX:

| | |
|-------|------------------------------------|
| A1.0 | SITE PLAN |
| A1.1 | SITE DETAILS |
| A1.2 | PLAYGROUNDS |
| A2.0 | FLOOR PLAN |
| A2.2 | ROOF PLAN |
| A3.0 | ELEVATIONS |
| A4.0 | SECTIONS |
| C1.0 | SITE PLAN |
| C1.1 | SITE DETAILS |
| C2.0 | GRADING AND DRAINAGE PLAN |
| C3.0 | UTILITY PLAN |
| L1.0 | LANDSCAPE PLAN |
| LDI-1 | LIGHTING PLAN & PHOTOMETRIC LAYOUT |

ARCHITECT
 PERKINS, WILLIAMS & COTTERILL ARCHITECTS
 3320 DATA DRIVE, SUITE 200
 RANCHO CORDOVA, CALIFORNIA 95670
 (916) 851-1400

CIVIL ENGINEER
 KIMLEY HORN
 765 THE CITY DRIVE #200
 ORANGE, CA 92668
 (714) 705-1374

OWNER REP.
 A HINMAN CONSTRUCTION & CONSULTING LLC.
 (760) 217- 8449
 ANDY HINMAN
 ANDY@AHINMANCC.COM



Vicinity Map

NOT TO SCALE



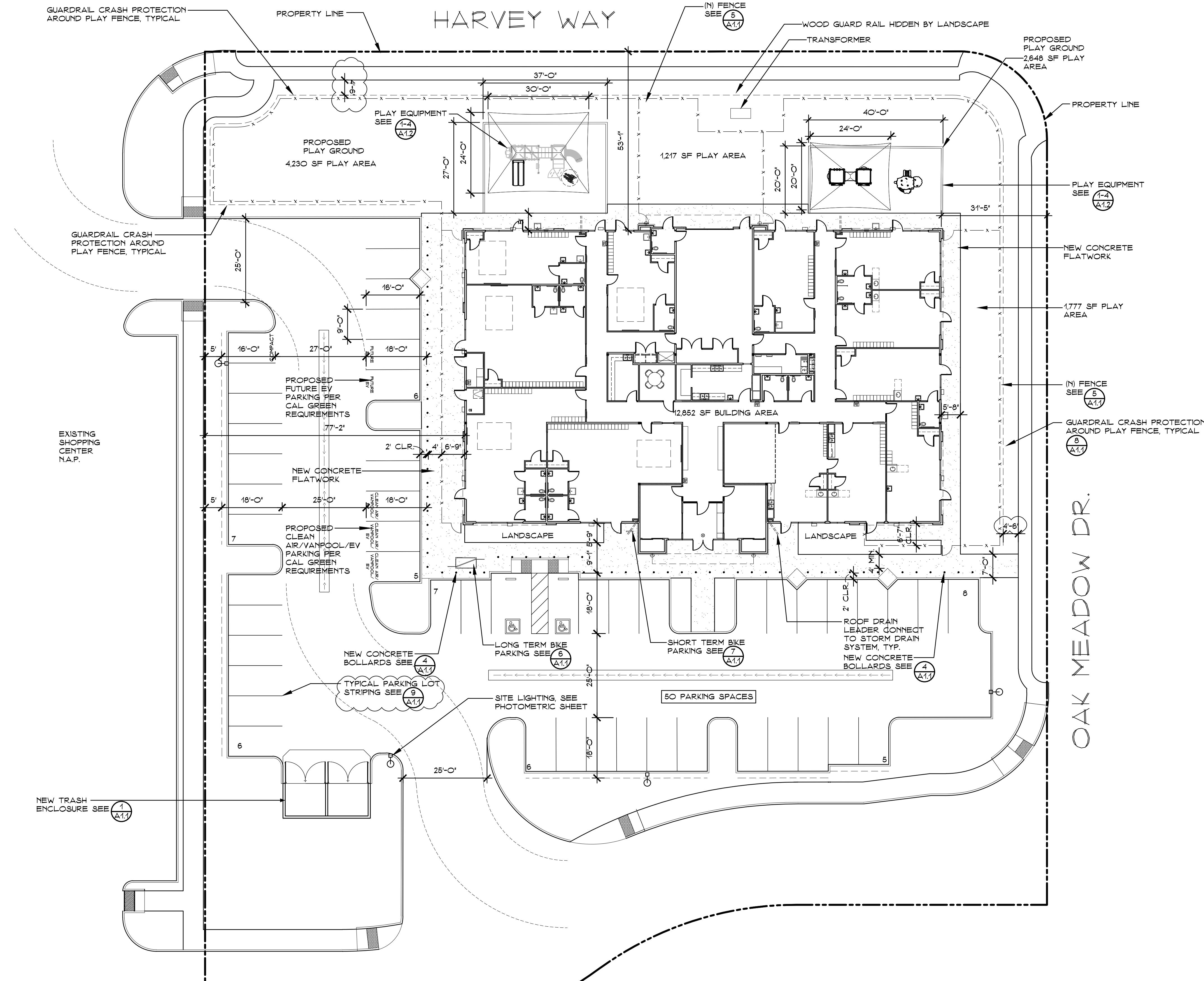
PERKINS, WILLIAMS & COTTERILL ARCHITECTS
 3320 Data Drive, Suite 200 • Rancho Cordova, California 95670
 T (916) 851-1400 F (916) 851-1408 E pwcarch@pwcarchitects.com

Site Plan

Project: GODDARD ROSEVILLE

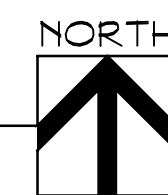
Job No. 21-741 Date: 12-1-21

Scale: AS NOTED



Preliminary Site Plan

1/16" = 1'-0"



Goddard School
 Blue Oaks Blvd, Roseville CA